



Flat 3 Oakbrook House 147 Oakbrook Road, Nether Green, Sheffield, S11

Saxton Mee



# Flat 3 Oakbrook House 147

## Nether Green

Offers Around

**£220,000**

GUIDE PRICE £220,000 - £230,000

A super location, backing onto Bingham Park, overlooking Porter Brook, a tastefully, stylishly converted two double bedroom second floor apartment with private balcony.

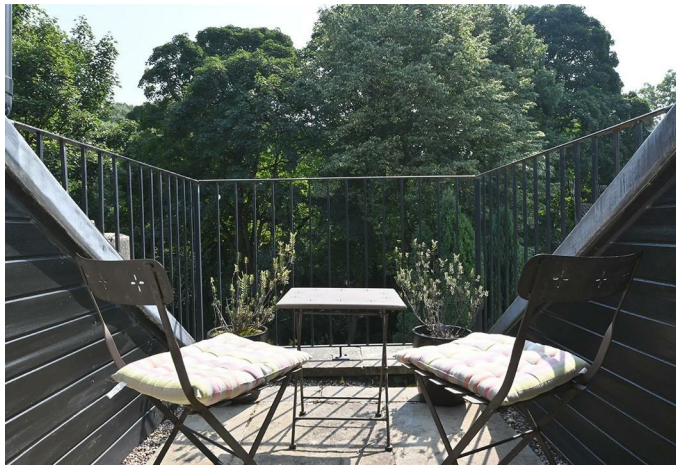
The property is accessed from the rear of Madelaine Peace Interiors where there is a secure communal entrance area. The property has a private entrance hall, open plan kitchen with a range of Italian kitchen units, adjacent dining area and lounge area with French windows to balcony, two double bedrooms with a range of built-in furniture, bathroom with full suite.

Nether Green is a very popular location with great amenities including cafes, a restaurant and micropub, with both Bingham Park and Endcliffe Park on the doorstep, and just a short drive to open countryside.

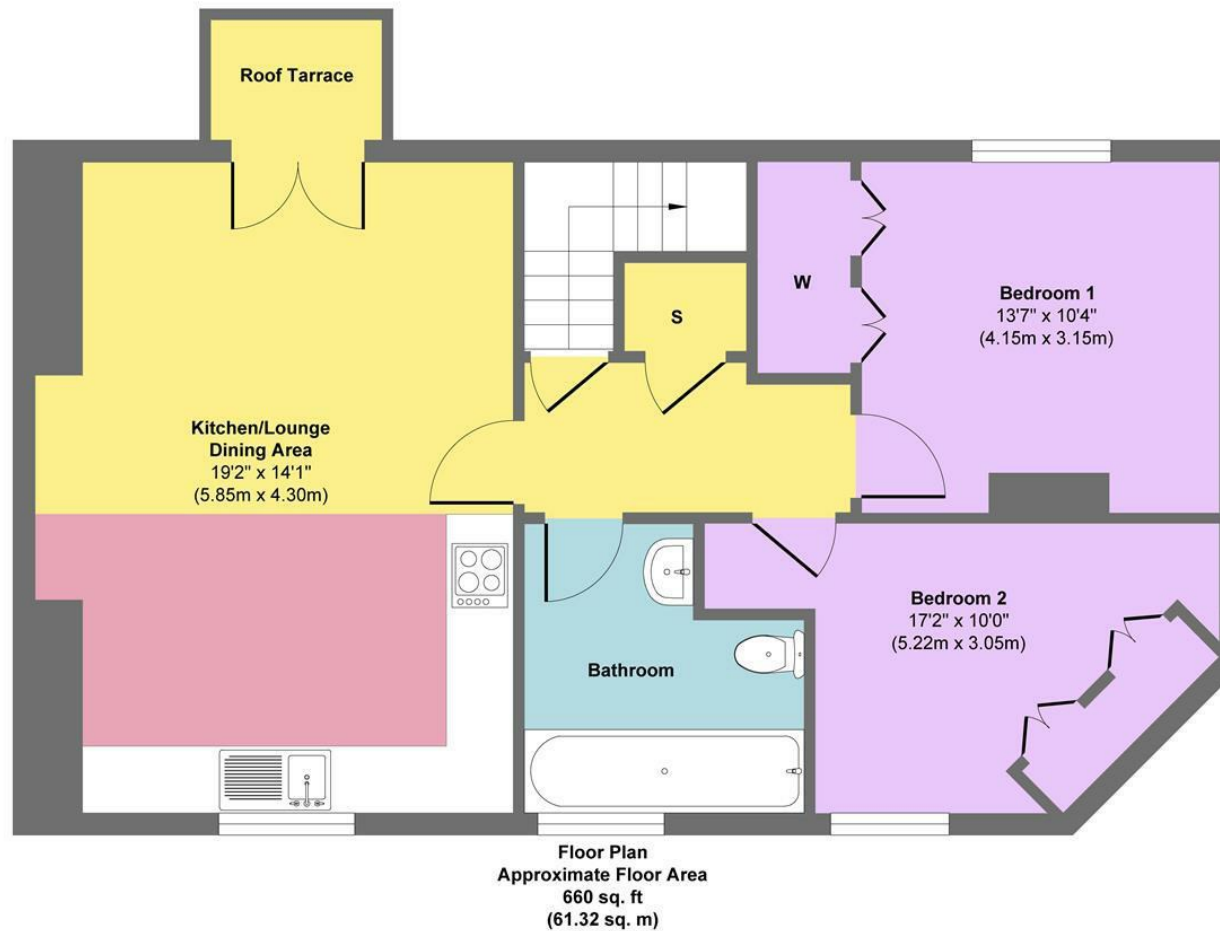


- Two Double Bedroom Second Floor Apartment
- Beautifully Maintained and Stylish Layout
- Ideal for First Time Buyer or Professional Couple
- Private Balcony with Southerly Aspect on Bingham Park and Porter Brook
- Feature Open Plan Living Room/Dining Room and Well Fitted Kitchen
- Great Local Amenities, Restaurants, Parks and Walking Distance of Open Countryside
- Very Sought After Location
- Energy Rating
- Viewing Banner Cross Office





## Apt 3, Oakbrook House



**Approx. Gross Internal Floor Area 660 sq. ft / 61.32 sq. m**

Illustration for identification purposes only, measurements are approximate, not to scale.  
Produced by Elements Property

While we endeavour to make our sales particulars fair, accurate and reliable, they are only a general guide to the property and, accordingly, if there is any point, which is of particular importance to you, please contact the relevant office. The Agents have not tested any apparatus, equipment, fittings or services and so cannot verify they are in working order. The buyer is advised to obtain verification. Please note all the measurement details are approximate and should not be relied upon as exact. All plans, floor plans and maps are for guidance purposes only and are not to scale. Under no circumstances should they be relied upon as exact or for use in planning carpets and other such fixtures, fittings or furnishings. YOUR HOME IS AT RISK IF YOU DO NOT KEEP UP REPAYMENTS ON A MORTGAGE OR OTHER LOAN SECURED ON IT. 'A Life Assurance policy may be requested.' 'Written Quotations of credit terms available on request.'

Banner Cross  
T: 0114 268 3241  
E: [bannercross@saxtonmee.co.uk](mailto:bannercross@saxtonmee.co.uk)  
[www.saxtonmee.co.uk](http://www.saxtonmee.co.uk)

Hathersage  
T: 01433 650009  
E: [hathersage@saxtonmee.co.uk](mailto:hathersage@saxtonmee.co.uk)

Bakewell  
T: 01629 815307  
E: [bakewell@saxtonmee.co.uk](mailto:bakewell@saxtonmee.co.uk)

Matlock  
T: 01629 828250  
E: [matlock@saxtonmee.co.uk](mailto:matlock@saxtonmee.co.uk)

**Saxton Mee**